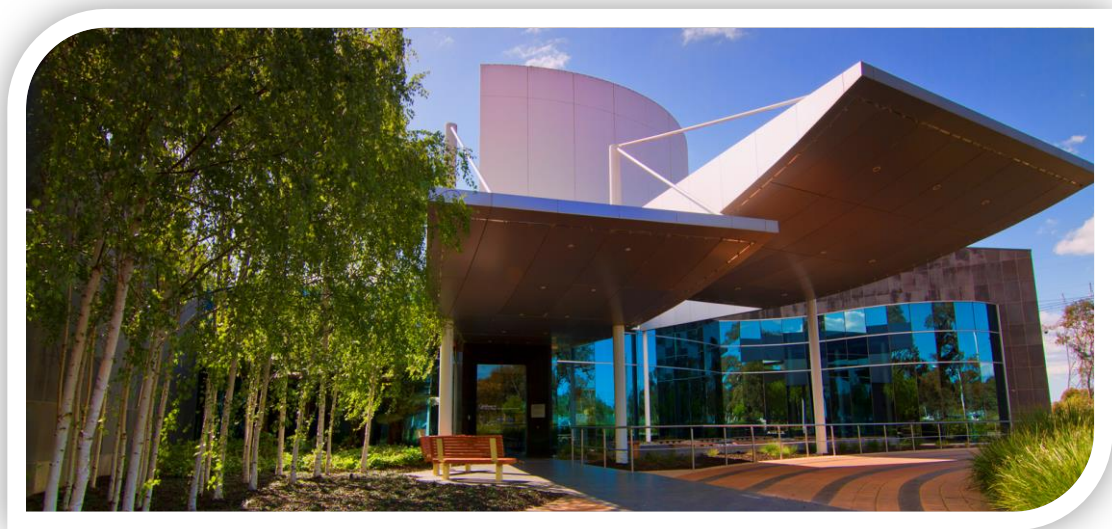




Plenty Ranges
Arts & Convention Centre



Woodstock Theatre Technical Specifications



STAGE DETAILS

Brief Stage Description:

**Unraked stage in the round. Painted concrete floor.
No tape marking on floor under any circumstances.**

Stage distributed load limit	1000kg / m2
Stage Point load limit	600kg
Orchestra Pit distributed load limit	N/A
Orchestra Pit Point load limit	N/A
Stage Rake	NO

Stage Dimensions:

Proscenium

**5500mm wide x 2500mm high. Note that proscenium is upstage of main performance area
Setting Line Down stage face of proscenium**

Distance From (*SL = Setting Line, CL = Centre Line*)

SL to DS edge of apron	4430mm
SL to DS edge of Orchestra Lift/Pit	N/A
SL to last upstage fly line	N/A
SL to rear wall	3380mm
CL to OP wall (or obstruction)	4600mm
CL to PS wall (or obstruction)	4600mm
Stage to underside of grid / roof	3950mm

Overhead obstructions

PS Gallery height	3950mm
OP Gallery height	3950mm

Auditorium:

Auditorium consists of stalls.

Seating capacity **175**

Orchestra Pit:

Orchestra Pit

No orchestra pit in this space.



Flying Facilities:

Fly System

No flies in this space.

Additional Rigging points

Grid over performance area, on motorised winches. See LX Plan.

Drapery:

*Type	Material	Colour	Width	Height	Quantity
House Curtain	Wool	Black	6000mm	2500mm	1

Access Equipment:

Ladders

(1) 4 metre "A" Frame aluminium.

(1) 2.1 metre "A" Frame fibreglass.

Stage Covers:

Style N/A

Dimensions N/A

Colour N/A

Stage Traps:

N/A.

Safety Curtain:

Safety Curtain installed **No**

Safety Curtain must be unobstructed at all times **N/A**

Thickness of Fire Curtain **N/A**

Distance from setting line **N/A**

Additional Requirements

None

Loading Dock:

Access

Access is through foyer via stairs. A small personnel elevator is available.

Restrictions / Obstructions

Stairs and narrow doors

Plenty Ranges Arts & Conventions Centre

35 Ferres Boulevard
South Morang VIC 3752

Locked Bag 1
Bundoora MDC VIC 3083

Tel 03 9217 2317

Fax 03 9409 9802

TTY 133 677 (ask for 9217 2317)

Email info@pracc.com.au

www.pracc.com.au

ABN 72 431 091 058



Staging Notes:

All flown items must be rigged with rated equipment and are subject to approval by a venue representative.

Limited rigging gear available in house. All flown items must be approved by a venue representative.

Plenty Ranges reserves the right to refuse any flown item at any time.

All flying must be directly supervised by a venue representative.

LIGHTING DETAILS

Stage LX

Setting Line to lighting bar

Usable bar width

Notes

Grid over performance space and seating

12500mm x 6200mm grid

Grid covers performance space and most of the seating area

Control:

Lighting desk

Strand Palette VL

Control channels

1024

Attribute channels

Infinite

Signal output

DMX512

Signal distribution

DMX to Dimmers, DMX to Grid

Remote riggers available onstage

No.

Dimmer Racks:

Total Dimmer Racks

2

2.5Kw Dimmer Racks

State Automation Solution Cool

Total dimmers @ 2.4kw per dimmer

24 channels

House Lights:

Independent control

Yes

Control positions

Control Room, backstage OP and FOH entrance.

Fade time adjustable

No

Plenty Ranges Arts & Conventions Centre

35 Ferres Boulevard

South Morang VIC 3752

Locked Bag 1

Bundoora MDC VIC 3083

Tel 03 9217 2317

Fax 03 9409 9802

TTY 133 677 (ask for 9217 2317)

Email info@pracc.com.au

www.pracc.com.au

ABN 72 431 091 058



Stage Luminare:

Profiles

Make	Model	Angle	Detail / Accessories	Watt	Total
Strand	Prelude	16/30	Gobo holders to suit, iris'	650w	5

Fresnel's

Make	Model	Detail / Accessories	Watt	Total
Strand	Cantata	Barn doors; Gel Frames	1200w	2

Wash

Make	Model	Detail / Accessories	Watt	Total
HiLED	PAR	RGB LED PAR	3w	18

Patching:

Location	Quantity	Numbering (US to DS)	Detail / Accessories
LX 1 (PS)	12	1 -12	
LX 2 (PS-C)	12	13 – 24	
LX 3 (OP-C)	12	25 – 36	
LX 4 (OP)	12	37 - 48	

Production Desk:

Production desk can be set-up at the back of the stalls. Table accommodates 2 people with dimmable lighting, DMX for the lighting desk, talkback, and audio patch lines.

Power:

3 Phase Outlets

- (2) 40A backstage on PS
- (1) 40A under auditorium seats

Cabling:

240v Extension Cable

The theatre has a good stock of extension leads to accommodate the venue's standard lighting rig.

Looms

N/A

3 phase Extensions

N/A

Plenty Ranges Arts & Conventions Centre

35 Ferres Boulevard
South Morang VIC 3752

Locked Bag 1
Bundoora MDC VIC 3083

Tel 03 9217 2317

Fax 03 9409 9802

TTY 133 677 (ask for 9217 2317)

Email info@pracc.com.au

www.pracc.com.au

ABN 72 431 091 058



AUDIO DETAILS

Control Positions:

Control Room

Rear Auditorium. Control Room open to Auditorium

Auditorium

Can be set up at Production desk.

Other

N/A.

Control & Amplification:

Primary Mixer

Allen & Heath Zed420, 16 channels, 2 stereo inputs, 4 sends and phantom power.

Amplifiers

(2) Peavey IPS 800 with Peavey PSX Crossover

EQ

(4) Peavey CEQ 280a

(2) Rane ME60 Stereo Graphic Eq

FX

TC Electronic M-one-XL effects unit

Speakers:

FOH Speakers

(2) Peavey HV1580 300W Full range

(2) Peavey ER1500 350W Subs

Playback:

Item	Make	Model	Detail	Total
CD Player	Denon	DN-C635	Single CD player	1
DVD / VHS Player	Sharp			

Microphones: Please Note – All Microphone stock is shared with the Yan Yean Theatre.

Make	Model	Detail / Accessories	Use	Total
Shure	SM 58a	Clips	Vocals	8
Shure	SM 57	Clips	Instruments	8
Shure	SM 94	Clips	Instruments	10
Sennheiser	E 602 MKII	Clip	Kick Drum	1
Sennheiser	EW 500 G3	Receivers	Vocals	20
Sennheiser	EW 500 e945	Handheld Microphones	Vocals	10
Sennheiser	EW 500 sk500	Beltpack Transmitter	Vocals	20

Plenty Ranges Arts & Conventions Centre

35 Ferres Boulevard
South Morang VIC 3752

Locked Bag 1
Bundoora MDC VIC 3083

Tel 03 9217 2317

Fax 03 9409 9802

TTY 133 677 (ask for 9217 2317)

Email info@pracc.com.au

www.pracc.com.au

ABN 72 431 091 058



Accessories: Please Note – All Accessories is shared with the Yan Yean Theatre.

Item	Model	Detail / Accessories	Total
Microphone Stands	Tripod Base	With Boom Arm	15
Microphone Stands	Tripod Base	Small	1

Patching:

Location	Quantity	Numbering	Detail
Control Room to PS	20	1 – 20	16 sends, 4 returns

Cabling:

Audio Cable

The theatre has a good stock of cable to accommodate the venue’s audio equipment. If additional audio equipment is being brought in additional cabling may be required.

AUDIO VISUAL DETAILS

Projection Room:

N/A

Projectors:

Epson EB-935W 3700 ANSI WXGA Projector

Screens:

3000mm x 1700mm, 16:9 ratio motorised screen mounted on proscenium

Projector Rigging Points:

Projector can be hung from any point on lx grid.

Cabling:

The theatre has some stock of VGA and RCA cable to accommodate the venue’s own equipment.

Plenty Ranges Arts & Conventions Centre

35 Ferres Boulevard
South Morang VIC 3752

Locked Bag 1
Bundoora MDC VIC 3083

Tel 03 9217 2317

Fax 03 9409 9802

TTY 133 677 (ask for 9217 2317)

Email info@pracc.com.au

www.pracc.com.au

ABN 72 431 091 058



BACKSTAGE DETAILS

Communications:

Stage Managers Desk

N/A.

Talkback

Master Unit

HME DX 200 Wireless Communications Base Station

Total sub stations

4 Wireless belt packs with headsets

Talkback patching located at: **Wireless**

Paging / Show relay

N/A.

Stage Monitor

N/A

Q Light System

In house Q light system available **No**

Dressing Rooms:

Dressing Room	Capacity	Toilets	Shower	Details
Green Room	10	2	Yes	

Laundry / Wardrobe:

Washing Machines

Yes, main theatre loading dock

Dryers

Yes, main theatre loading dock

Iron / ironing board

One

Clothes racks

Green Room has fixed rails

Production Facilities:

Production Office

No.

Phone

No

Fax

Yes, available in administration office

Access to phone for internet access

No.

Plenty Ranges Arts & Conventions Centre

35 Ferres Boulevard

South Morang VIC 3752

Locked Bag 1

Bundoora MDC VIC 3083

Tel 03 9217 2317

Fax 03 9409 9802

TTY 133 677 (ask for 9217 2317)

Email info@pracc.com.au

www.pracc.com.au

ABN 72 431 091 058



Greenroom:

Tea / Coffee facilities	Yes
Fridge	Yes
Microwave	No
Running water	Yes

Stage Door:

Access

Stage Door is located near loading dock on Service Lane. This door is unsupervised and kept locked at all times.

ADDITIONAL FACILITIES & INFORMATION

Orchestral:

N/A

Rehearsal Space:

Eucalypt Room. Bookings required for use

VENUE:

Venue Contacts:

Venue Address	35 Ferres Boulevard, South Morang, Vic, 3752
Venue Postal Address	Locked Bag 1, Bundoora MDC, Bundoora, Vic, 3083

Staff Contacts:

Venue Manager	Anthony Rogan
Email Address	anthony.rogan@whittlesea.vic.gov.au
Phone Number	03) 9217 2463
Mobile	0408 503 346
Technical Manager	Matthew Cartledge
Email Address	matthew.cartledge@whittlesea.vic.gov.au
Phone Number	03) 9217 2150
Administration	
Phone Number	03) 9217 2317
Email Address	info@pracc.com.au
Fax Number	03) 9409 9802
Box Office	
Phone Number	9217 2317
Email Address	bookings@pracc.com.au
Fax Number	03) 9409 9802

Plenty Ranges Arts & Conventions Centre

35 Ferres Boulevard
South Morang VIC 3752

Locked Bag 1
Bundoora MDC VIC 3083

Tel 03 9217 2317

Fax 03 9409 9802

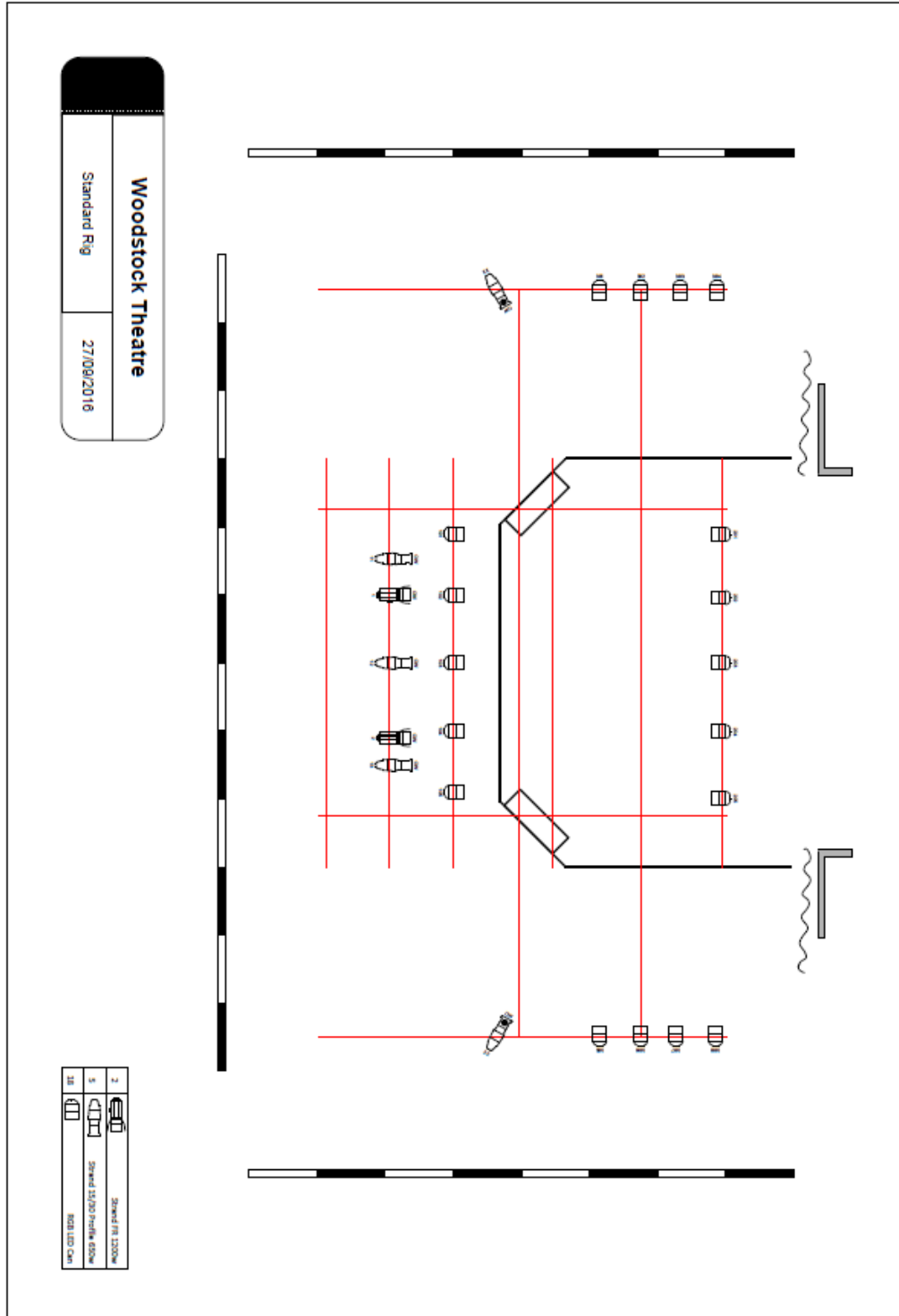
TTY 133 677 (ask for 9217 2317)

Email info@pracc.com.au

www.pracc.com.au

ABN 72 431 091 058

LIGHTING PLAN



Plenty Ranges Arts & Conventions Centre

35 Ferres Boulevard
South Morang VIC 3752

Locked Bag 1
Bundoora MDC VIC 3083

Tel 03 9217 2317

Fax 03 9409 9802

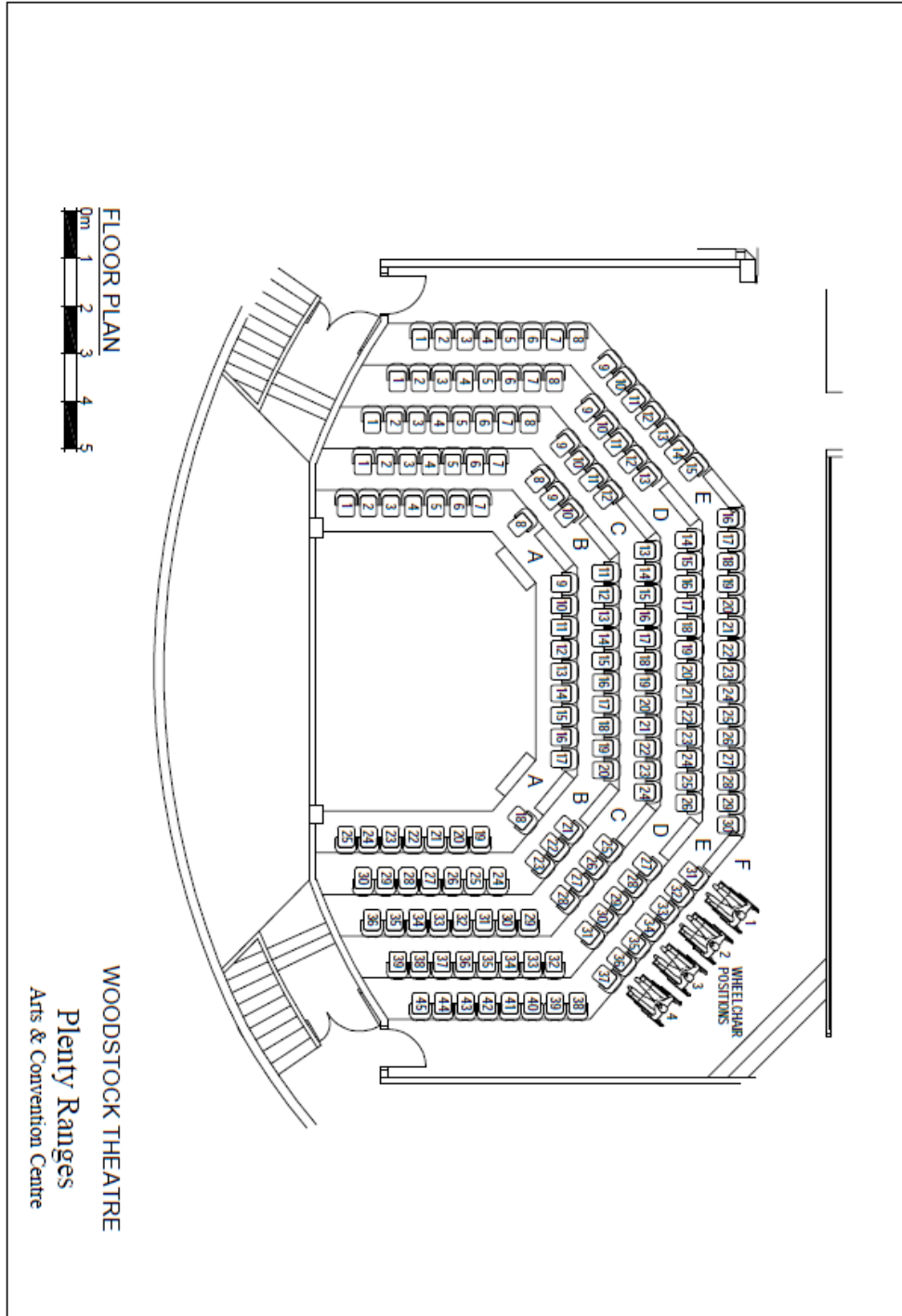
TTY 133 677 (ask for 9217 2317)

Email info@pracc.com.au

www.pracc.com.au

ABN 72 431 091 058

SEATING PLAN



Plenty Ranges Arts & Conventions Centre

35 Ferres Boulevard
South Morang VIC 3752

Locked Bag 1
Bundoora MDC VIC 3083

Tel 03 9217 2317

Fax 03 9409 9802

TTY 133 677 (ask for 9217 2317)

Email info@pracc.com.au

www.pracc.com.au

ABN 72 431 091 058